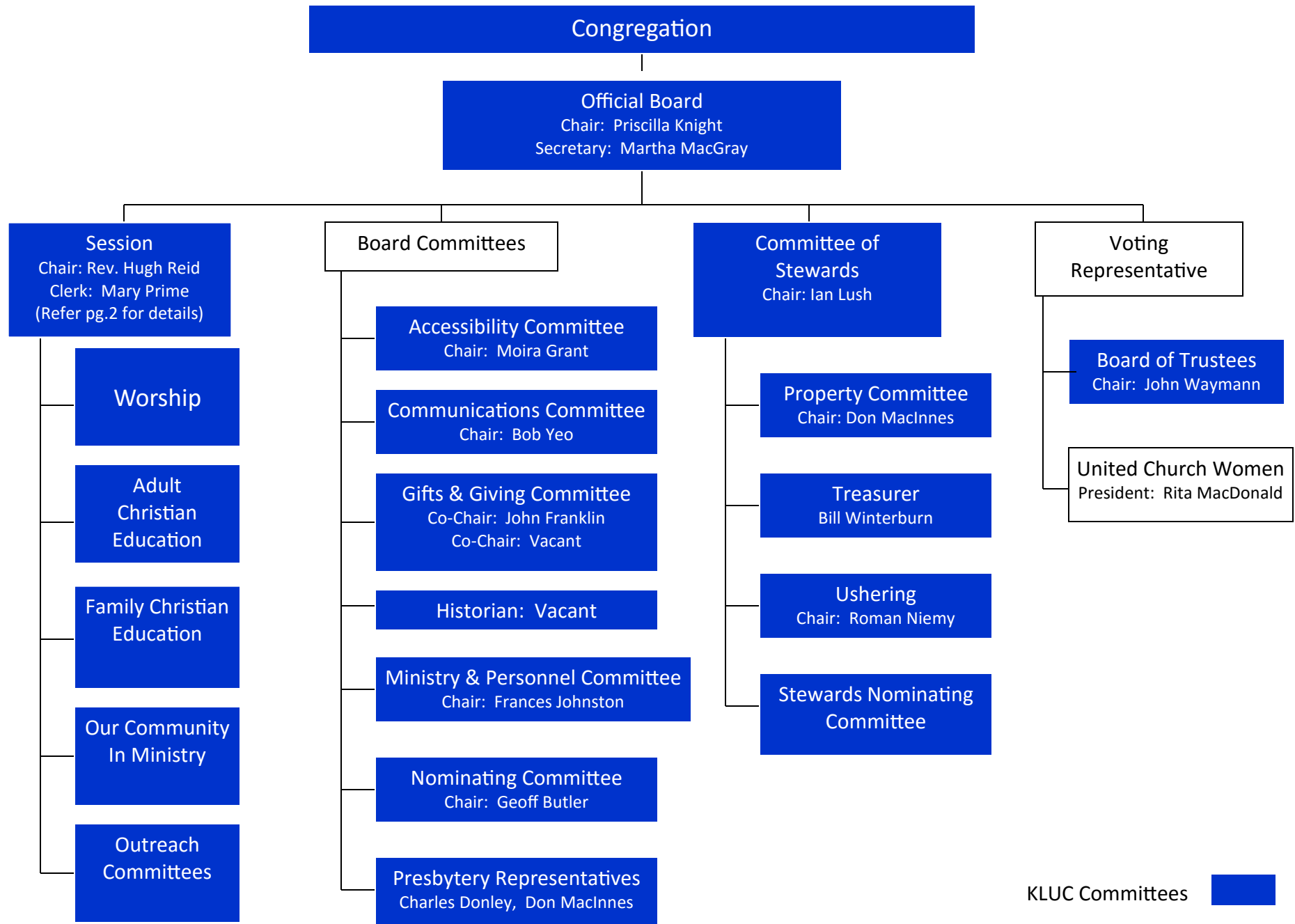
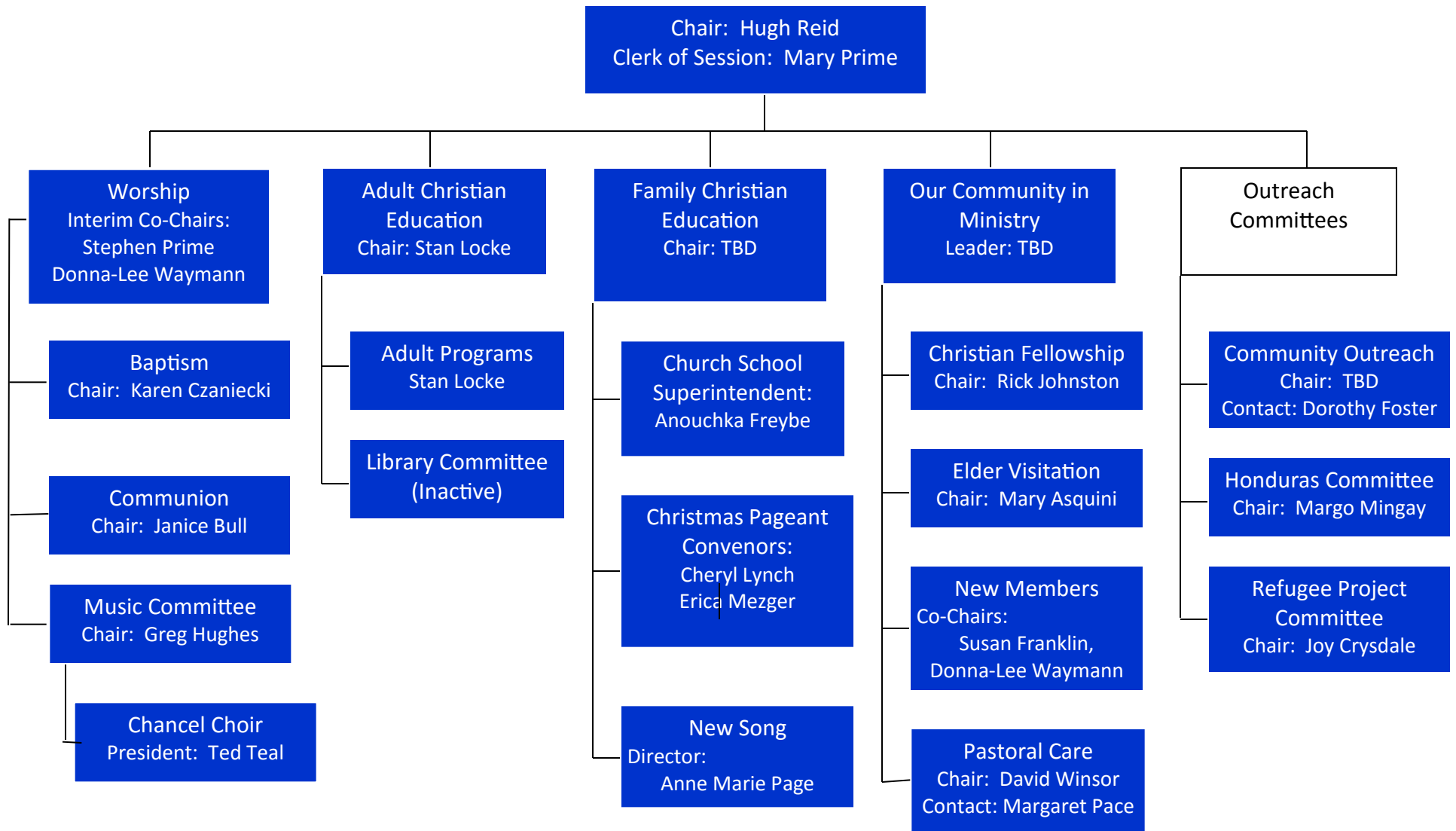


# Kingsway-Lambton United Church Organization Chart (March 2016)



## Session Committees



## Advisory and Active Ad Hoc Committees

- Coordinating Committee
- Coordinating Minister

## Informal Kingsway-Lambton Groups and Contacts

- |                      |                         |
|----------------------|-------------------------|
| • Close Knitters     | Susan Franklin          |
| • Grace Notes        | Steve Prime             |
| • Men's Group        | Roger Dawson, Ed Coman  |
| • Publicans          | Sam Goodwin             |
| • Partners in Prayer | Gwen Atkinson           |
| • Mosaic             | Anne Marie Page         |
| • Hanmer Prime       | Kim Hanmer, Steve Prime |
| • Golf Tournament    | TBD                     |